


CONSULTANT:

SEAL:



CVS
pharmacy

TEXAS-12900-LEFT
CHAMFER DRIVE-THRU

STORE NUMBER: 08978

STONE OAK & CANYON GOLF
SAN ANTONIO, TEXAS

DEAL TYPE NEW

DEVELOPER:

SUN BELT INVESTMENTS PARTNERS L LP

REVISIONS:

AA DEVELOPMENT COMMENTS 07-23-09

DRAWING BY: LDD

DATE: 06 APRIL 2009

JOB NUMBER: FBWSH01

TITLE:

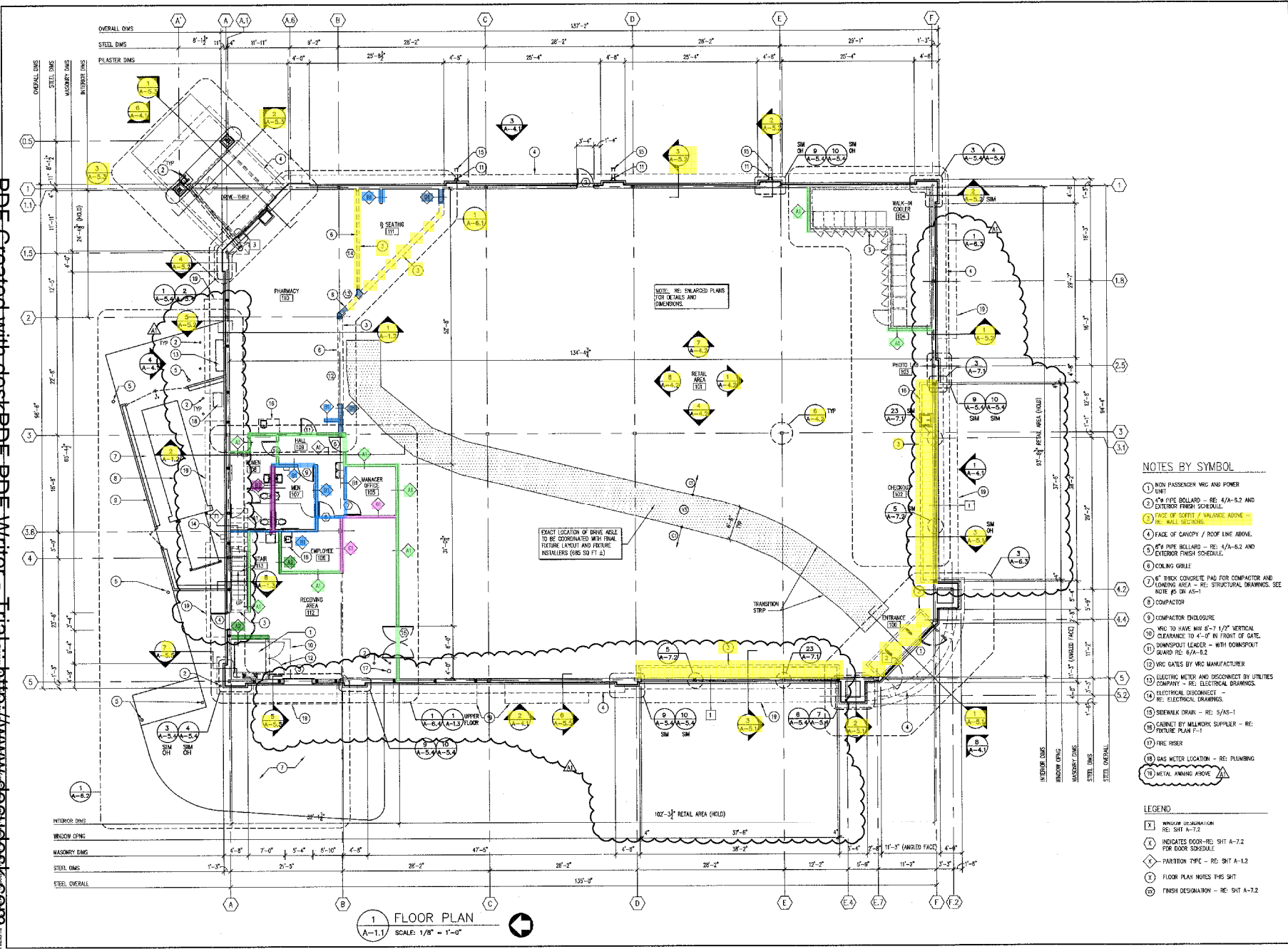
FLOOR PLAN

SHEET NUMBER:

A-1.1

COMMENTS:
ISSUED FOR BID / PERMIT

PDF Created with deskPDF PDF Writer - Trial http://www.docuPDF.com



NOTES BY SYMBOL

- 1 NON PASSENGER VRC AND POWER UNIT
- 2 4" PIPE BOLLARD - RE: 4/A-8.2 AND EXTERIOR FINISH SCHEDULE
- 3 FACE OF SOCKET / VALANCE ABOVE - RE: WALL SECTIONS
- 4 FACE OF CANOPY / ROOF LINE ABOVE
- 5 6" PIPE BOLLARD - RE: 4/A-8.2 AND EXTERIOR FINISH SCHEDULE
- 6 DOCKING GRILLE
- 7 6" FIBER CONCRETE PAD FOR COMPACTOR AND LANDING AREA - RE: STRUCTURAL DRAWINGS. SEE NOTE #5 ON AS-1
- 8 COMPACTOR
- 9 COMPACTOR ENCLOSURE
- 10 VRC TO HAVE MIN 8'-7 1/2" VERTICAL CLEARANCE TO 4'-0" IN FRONT OF GATE.
- 11 DOWNSPOUT LEADER - WITH DOWNSPOUT GUARD RE: 6/A-8.2
- 12 VRC GATES BY VRC MANUFACTURER
- 13 ELECTRIC METER AND DISCONNECT BY UTILITIES COMPANY - RE: ELECTRICAL DRAWINGS
- 14 ELECTRICAL DISCONNECT - RE: ELECTRICAL DRAWINGS
- 15 SINK/WK DRAIN - RE: 5/AS-1
- 16 CABINET BY MILLWORK SUPPLIER - RE: FLOOR PLAN F-1
- 17 FIRE RISER
- 18 GAS METER LOCATION - RE: PLUMBING
- 19 METAL AWNING ABOVE

LEGEND

- X WINDOW DESIGNATION - RE: SHT A-7.2
- Y INDICATES DOOR - RE: SHT A-7.2 FOR DOOR SCHEDULE
- Z PARTITION TYPE - RE: SHT A-1.2
- Y FLOOR PLAN NOTES THIS SHT
- DD FINISH DESIGNATION - RE: SHT A-7.2

1 FLOOR PLAN
A-1.1 SCALE: 1/8" = 1'-0"